

Light efficiency:

105 Lumen/Watt

Color temperature:

4086 K

Light quality:

CRI:94.1, R_g:96.5, R_r:89.5

P: 2 / V: - / F: 3

Output: 3018 lm

Peak: 8774 cd

Power: 28.8 W

Voltage: 120 V

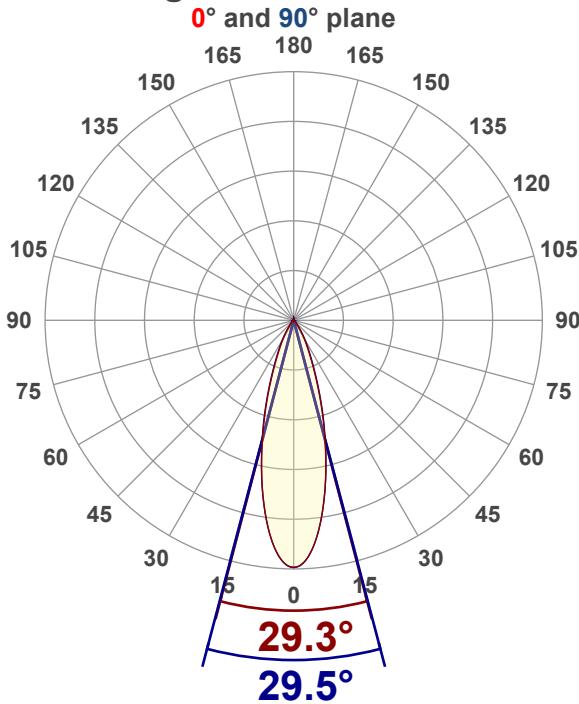
Current: 0.245 A

PF: 0.98

THD: 9.01 %



Angular Distribution



Product name:

RA35P-16CTR-N2P2SXXX

Test Date:

3/31/2026

Beam Angle (50% of the brightness of the centre):
 29.4°

Field Angle (10% of the brightness of the centre):
 57.9°

Cut Off Angle (2.5% of the brightness of the centre):
 76.3°

Beam Details

*measured at centre of beam

Mounting Height (feet)/(meter)	Lux*	Footcandles*	Beam width (feet) / (meter)
4 ft / 1.2 m	5895 lx	548 fc	2.1 ft / 0.6 m
8 ft / 2.4 m	1474 lx	137 fc	4.2 ft / 1.3 m
12 ft / 3.7 m	655 lx	61 fc	6.3 ft / 1.9 m
16 ft / 4.9m	368 lx	34 fc	8.4 ft / 2.6 m
20 ft / 6.1m	236 lx	22 fc	10.5 ft / 3.2 m

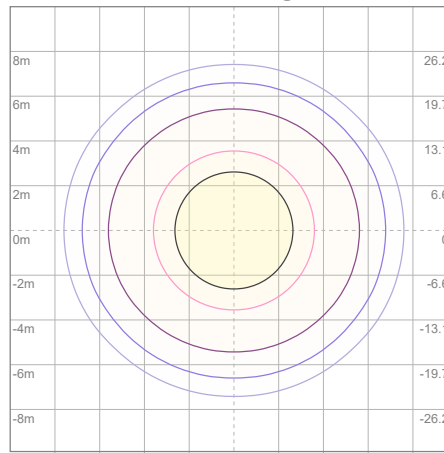
Beam center

Photometric Testing Report

Zonal Lumen Summary

Zone	Lumen	%Luminaire
0-30	2536	84.03%
0-40	2779	92.08%
0-60	2938	97.35%
60-90	75.0	2.49%
70-100	30.9	1.02%
90-120	0.750	0.02%
0-90	3014	99.87%
90-180	4.49	0.15%
0-180	3018	100.00%

ISO Lux Diagram



Lux at center:		942 lx
— 3%	28.26 lx	
— 5%	47.10 lx	
— 10%	94.20 lx	
— 30%	282.60 lx	
— 50%	471.00 lx	

Conditions:
 Number of planes: 8
 Lux distribution on a surface when lamp is mounted at 3.05 meters from the surface.

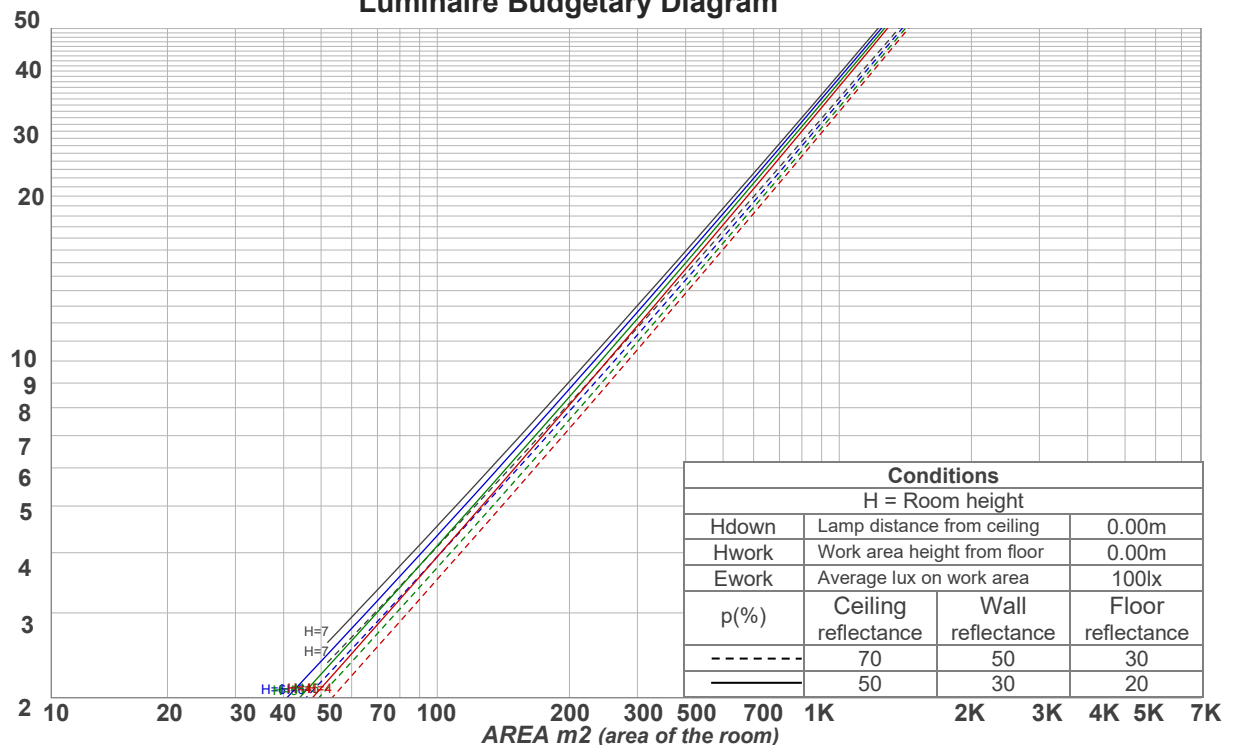
Mounting height: 3.05 meters (10 feet)

Coefficients of Utilization

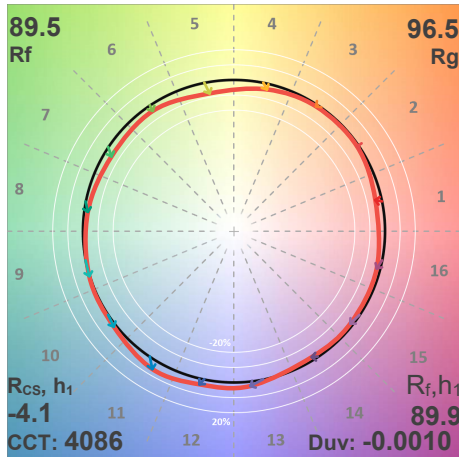
Ceiling reflectance	80				70				50			30			10			0
	70	50	30	10	70	50	30	10	50	30	10	50	30	10	50	30	10	0
Wall reflectance	70	50	30	10	70	50	30	10	50	30	10	50	30	10	50	30	10	0
Floor reflectance	20	20	20	20	20	20	20	20	20	20	20	20	20	20	20	20	20	0
RCR	(RCR: Room Cavity Ratio)																	
	Room Values are expressed as percentage of Lumens delivered to the task surface																	
0	119	119	119	119	116	116	116	116	111	111	111	106	106	106	102	102	102	100
1	114	111	109	107	111	109	107	105	105	104	102	101	100	99	98	97	96	94
2	109	105	101	98	107	103	100	97	100	97	95	97	95	93	94	92	91	89
3	104	99	94	91	103	97	93	90	95	91	89	92	90	87	90	88	86	84
4	100	94	89	85	99	93	88	85	90	87	84	88	85	83	87	84	82	80
5	96	89	84	80	95	88	83	80	86	82	79	85	81	79	83	80	78	77
6	93	85	80	76	91	84	79	76	83	79	75	81	78	75	80	77	74	73
7	89	81	76	73	88	81	76	72	79	75	72	78	74	72	77	74	71	70
8	86	78	73	69	85	77	73	69	76	72	69	75	72	69	75	71	68	67
9	83	75	70	67	82	74	70	66	74	69	66	73	69	66	72	68	66	65
10	80	72	67	64	79	72	67	64	71	67	64	70	66	64	70	66	63	62

LAMPS (number of lamps)

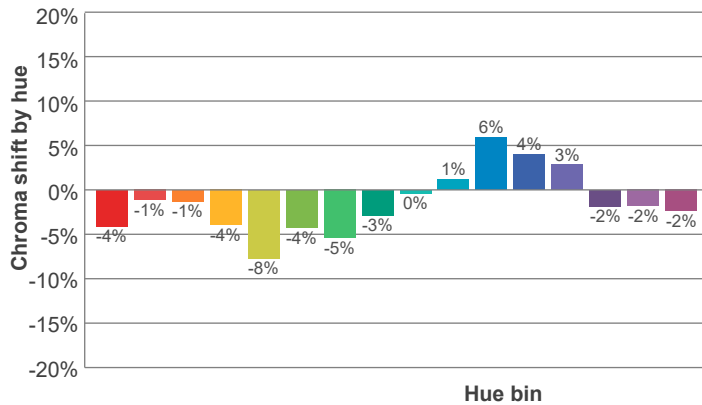
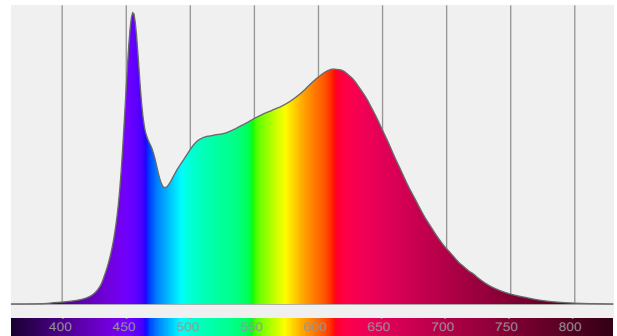
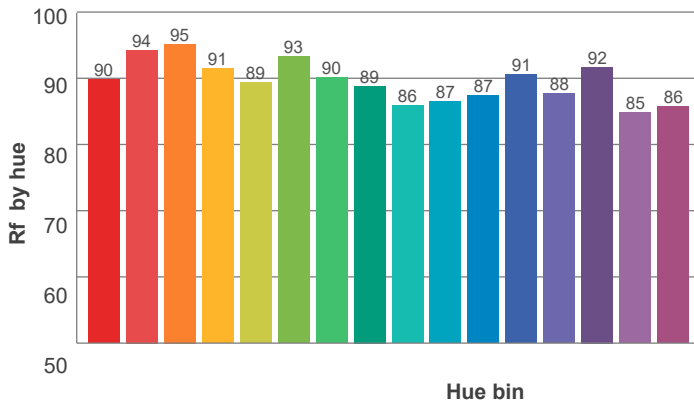
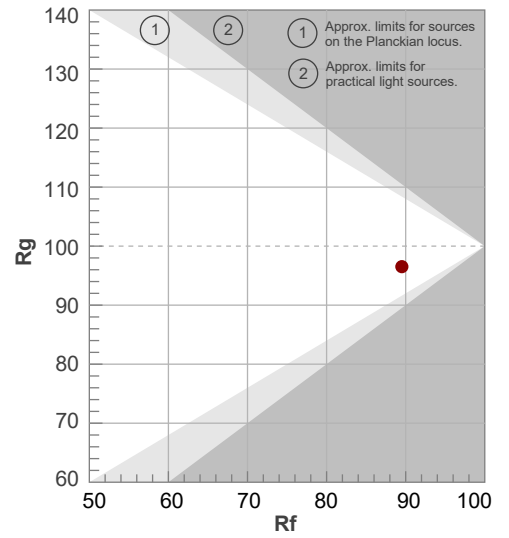
Luminaire Budgetary Diagram



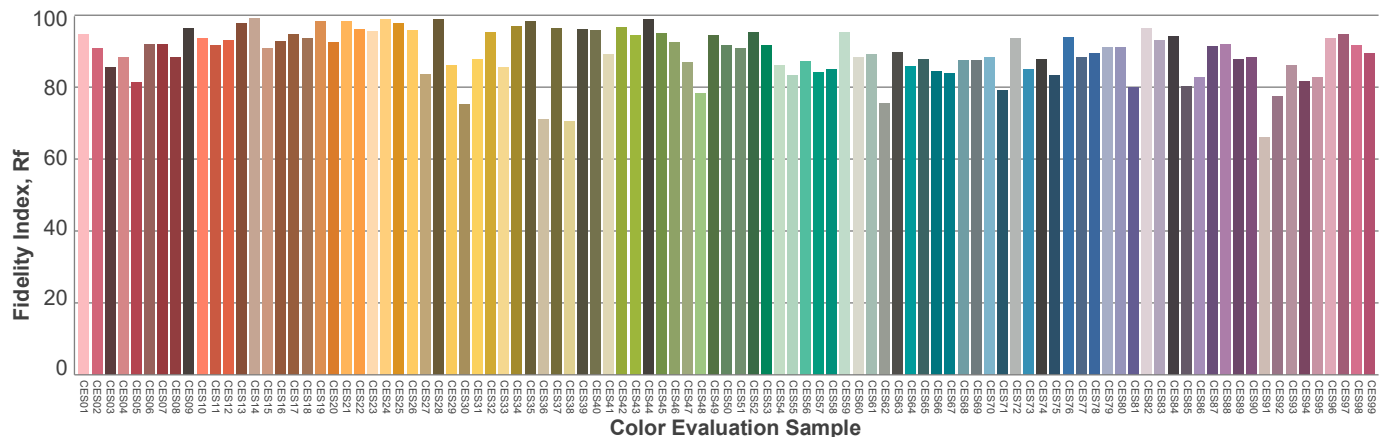
ANSI/IES TM-30-18 P: 2 / V: - / F: 3



Hue Bin	R _f	Shifts (%)	
		Chroma	Hue
1	90	-4%	2%
2	94	-1%	1%
3	95	-1%	1%
4	91	-4%	-3%
5	89	-8%	-2%
6	93	-4%	0%
7	90	-5%	4%
8	89	-3%	7%
9	86	0%	11%
10	87	1%	9%
11	87	6%	6%
12	91	4%	-2%
13	88	3%	-9%
14	92	-2%	-3%
15	85	-2%	-8%
16	86	-2%	-6%



Red: 28.1%, Power=20.3mW
 Blue: 16.9%, Power=33.7mW
 Green: 28.3%, Power=38.7mW
 UVA: 0%, Power=0.0mW
 Dominant Wavelength: 582nm
 1st Peak Wavelength: 455nm
 2nd Peak Wavelength: 611nm



Glare Evaluation According to UGR

Corrected, comprehensive UGR table according to 117-1995, S/H ratio=0.25

p Ceiling		70	70	50	50	30	70	70	50	50	30
p Walls		50	30	50	30	30	50	30	50	30	30
p Floor		20	20	20	20	20	20	20	20	20	20
Room size		Viewing direction at right angles to lamp axis					Viewing direction parallel to lamp axis				
H = mounting height above eye level											
X Y											
2H	2H	14.2	14.7	14.2	14.9	15.1	14.4	14.9	14.5	15.2	15.3
	3H	14.8	15.5	15.1	15.7	15.8	15.0	15.7	15.4	15.9	16.1
	4H	15.1	15.8	15.5	16.0	16.3	15.3	16.0	15.7	16.2	16.4
	6H	15.4	16.0	15.7	16.3	16.6	15.6	16.2	15.9	16.5	16.8
	8H	15.5	16.0	15.8	16.4	16.8	15.7	16.2	16.0	16.5	16.9
	12H	15.5	16.1	15.9	16.4	16.8	15.7	16.2	16.0	16.6	17.0
4H	2H	14.3	15.0	14.7	15.2	15.4	14.5	15.2	14.9	15.4	15.6
	3H	15.3	15.9	15.7	16.2	16.6	15.5	16.0	15.9	16.4	16.8
	4H	15.7	16.2	16.2	16.6	17.2	15.9	16.4	16.3	16.8	17.3
	6H	16.1	16.6	16.6	17.0	17.3	16.2	16.8	16.7	17.1	17.4
	8H	16.2	16.7	16.7	17.0	17.4	16.3	16.8	16.8	17.2	17.5
	12H	16.3	16.6	16.8	17.0	17.5	16.4	16.8	16.9	17.2	17.6
8H	4H	15.9	16.4	16.4	16.7	17.1	16.0	16.5	16.5	16.8	17.2
	6H	16.4	16.7	16.9	17.2	17.7	16.5	16.8	17.0	17.3	17.8
	8H	16.6	16.9	17.1	17.4	18.0	16.7	17.0	17.2	17.5	18.1
	12H	16.7	16.9	17.3	17.4	18.0	16.8	17.1	17.4	17.6	18.2
12H	4H	15.9	16.2	16.4	16.6	17.1	16.0	16.4	16.5	16.8	17.2
	6H	16.5	16.7	17.0	17.2	17.8	16.6	16.8	17.1	17.3	18.0
	8H	16.6	16.9	17.2	17.4	18.0	16.8	17.0	17.4	17.5	18.1
Variation of the observer position for the luminaire distance S											
S = 1.0H		1.5 / -0.6					1.7 / -0.7				
S = 1.5H		2.9 / -0.9					3.3 / -1.0				
S = 2.0H		4.3 / -1.2					4.7 / -1.3				
Corrected glare indices referring to 3018 lm total luminous flux											

Due to our continued efforts to improve our products, product specifications are subject to change without notice. Please refer to our website for the latest test results.